

A Project by



MARKETING & REAL ESTATE DEVELOPERS



THE CROWN OF NEW CITY



WHATS INSIDE?

1. Why Elite Tower
2. Special Features
3. What Makes Us Unique
4. Find The Place You Dream
5. Project Timeline
6. Our Location
7. Our Payment Plan
8. Get Intouch With Us





WHY ELITE TOWER?

Elite Tower is the most ravishing residential and commercial structure with all the luxurious highlights which gives you tremendous lifestyle and the most attractive investment package to have the way forward to a better future. You will love this delightful infrastructure with modern and breathtaking charm. At Elite Tower we offer international standards of living with all the comfort and hospitality,

offering fully serviced apartments equipped with all facilities. We offer luxury apartments with all the comforts of a hotel. Designed to inspire, all units feature spacious closets and fully equipped Kitchens. Thoughtful attention focused on warm hearted service separates us from the rest, making us the preferred choice of peace & quality seekers.

SPECIAL FEATURES

Our clients will enjoy access to a full spectrum of dining, living & leisure facilities round the clock, some of our services include:


Fitness Center Dedicated
To Residents


24/7 Security


Rooftop Swimming Pool


Round The Clock
Maintenance Services


Earthquake Resilient
Structure

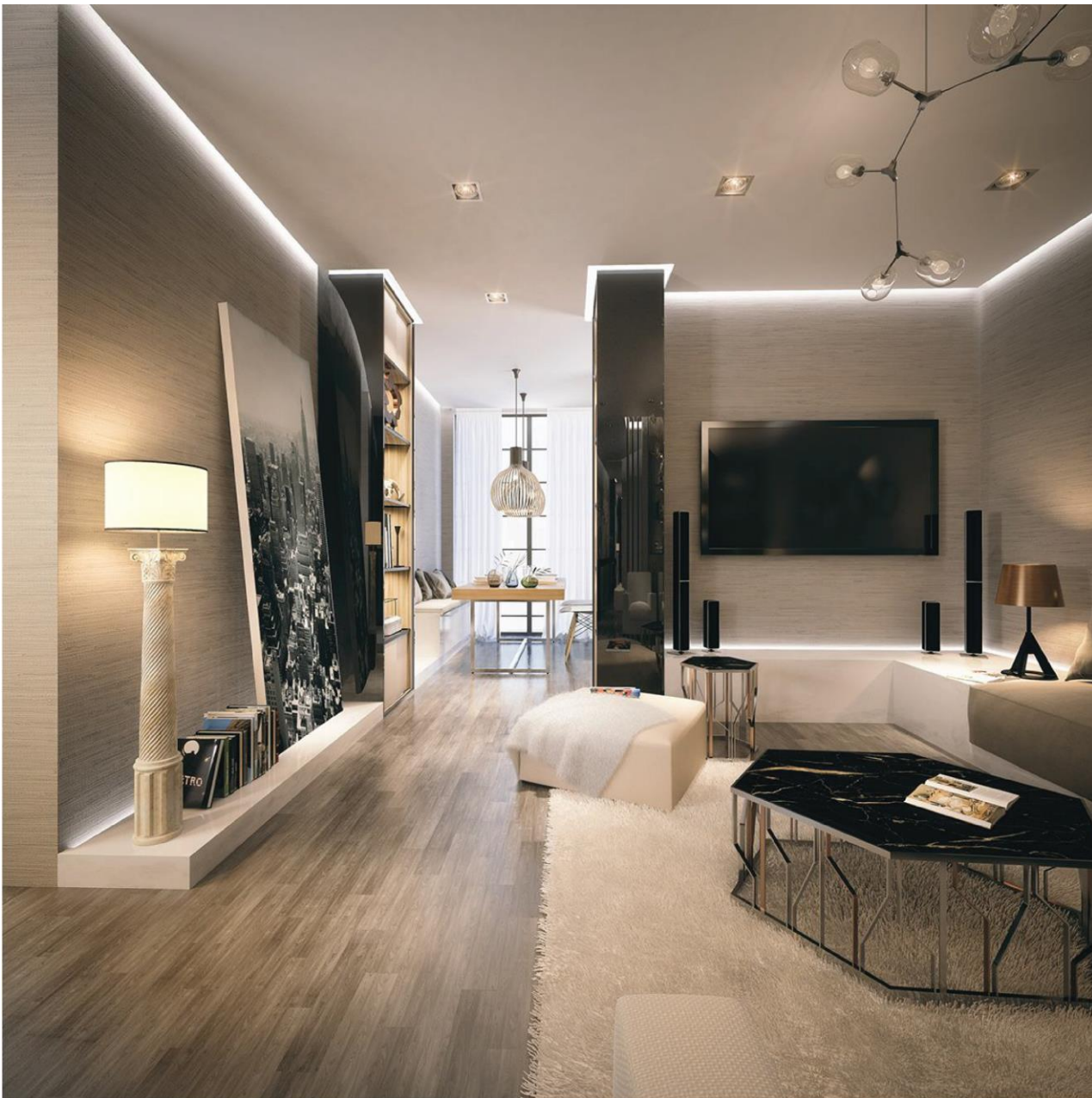

Huge Lobby For Residents


House Keeping


Garbage Shoots


Laundry Services


Fire Fighting System



WHAT MAKES US UNIQUE



Booking Starts With PKR 3 Lacs Only



Lifetime Rental Policy



Get PKR 22000 Per Month On
Investment Of PKR 30 Lacs



Fully Serviced Apartments



Annual Appreciation On Investment
& Rentals



Semi Furnished Apartments



Buy Back Policy



Limited Commercial Units For Brands



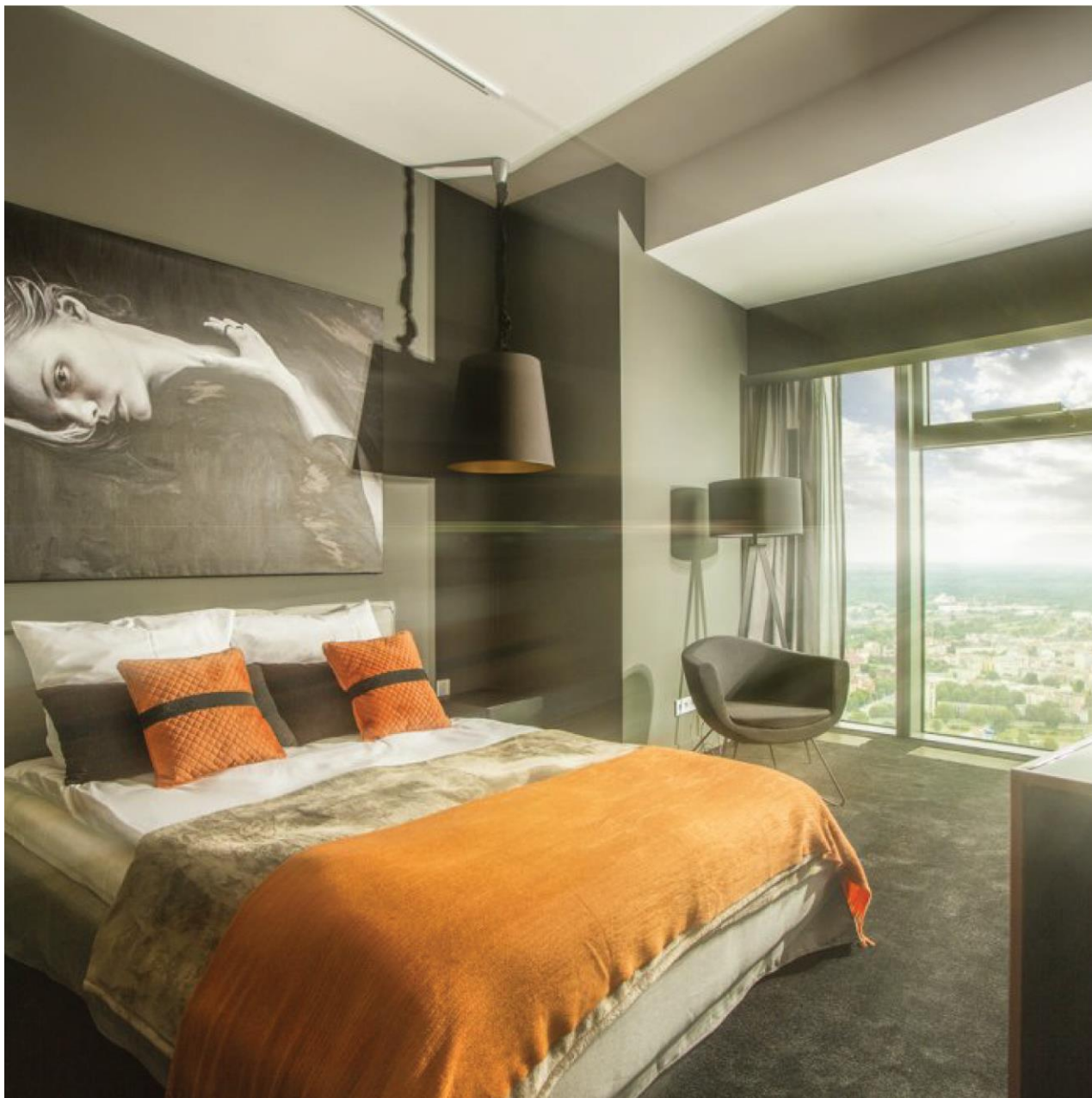
20 Minutes' Drive From The New
International Airport Islamabad



Located On M-1 Motorway



10 Minutes' Drive From CPEC Route



FIND A PLACE YOU DREAM

This elegant and perfect living space will stun you with its modern and dazzling interior finishes. This 2 bedroom & 3 bedroom apartment has spacious elegance, large panoramic windows that provide ample of natural light and view of spectacular sunrise and sunset, and tastefully decorated with design elements. All of this situated in a convenient, friendly neighborhood with outstanding schools, hospitals, brands, eateries and only 20 minutes from New International Airport Islamabad.

PROJECT TIMELINE

Below is the projected order of key milestone events to be accomplished in the 3-year life-cycle of high-rise Elite Tower:



Construction Commencement: March 2021



Grey Structure Completion: 18 months



Project Completion: March 2023



OUR PAYMENT PLAN

LOWER GROUND Rate per sq.ft=32,500/-

Shop No.	Shop Area	Total Price	Down Payment	Quarterly Installment	Monthly Installment	On Possession
	Sq.ft	PKR	25%	12	36	10%
LG-01	267.75	8,701,875	2,175,469	471,352	157,117	870,188
LG-02	267.75	8,701,875	2,175,469	471,352	157,117	870,188
LG-03	279.00	9,067,500	2,266,875	491,156	163,719	906,750
LG-04	279.00	9,067,500	2,266,875	491,156	163,719	906,750
LG-05	338.50	11,001,250	2,750,313	595,901	198,634	1,100,125
LG-06	338.50	11,001,250	2,750,313	595,901	198,634	1,100,125
LG-07	420.50	13,666,250	3,416,563	740,255	246,752	1,366,625
LG-08	279.00	9,067,500	2,266,875	491,156	163,719	906,750
LG-09	279.00	9,067,500	2,266,875	491,156	163,719	906,750
LG-10	282.50	9,181,250	2,295,313	497,318	165,773	918,125
LG-11	416.00	13,520,000	3,380,000	732,333	244,111	1,352,000

GROUND FLOOR Rate per sq.ft=39,500/-

Shop No.	Shop Area	Total Price	Down Payment	Quarterly Installment	Monthly Installment	On Possession
	Sq.ft	PKR	25%	12	36	10%
GF-01	267.75	10,576,125	2,644,031	572,873	190,958	1,057,613
GF-02	267.75	10,576,125	2,644,031	572,873	190,958	1,057,613
GF-03	279.00	11,020,500	2,755,125	596,944	198,981	1,102,050
GF-04	279.00	11,020,500	2,755,125	596,944	198,981	1,102,050
GF-05	420.75	16,619,625	4,154,906	900,230	300,077	1,661,963
GF-06	482.75	19,068,625	4,767,156	1,032,884	344,295	1,906,863
GF-07	279.00	11,020,500	2,755,125	596,944	198,981	1,102,050
GF-08	279.00	11,020,500	2,755,125	596,944	198,981	1,102,050
GF-09	282.50	11,158,750	2,789,688	604,432	201,477	1,115,875
GF-10	416.00	16,432,000	4,108,000	890,067	296,689	1,643,200

OFFICE FLOOR Rate per sq.ft=16,500/-

Shop No.	Shop Area Sq.ft	Total Price PKR	Down Payment 25%	Quarterly Installment 12	Monthly Installment 36	On Possession 10%
OFF-01	510.00	8,415,000	2,103,750	455,813	151,938	841,500
OFF-02	436.00	7,194,000	1,798,500	389,675	129,892	719,400
OFF-03	436.60	7,203,900	1,800,975	390,211	130,070	720,390
OFF-04	417.00	6,880,500	1,720,125	372,694	124,231	688,050
OFF-05	350.10	5,776,650	1,444,163	312,902	104,301	577,665
OFF-06	357.00	5,890,500	1,472,625	319,069	106,356	589,050
OFF-07	380.00	6,270,000	1,567,500	339,625	113,208	627,000
OFF-08	400.10	6,601,650	1,650,413	357,589	119,196	660,165
OFF-09	406.40	6,705,600	1,676,400	363,220	121,073	670,560
OFF-10	353.90	5,839,350	1,459,838	316,298	105,433	583,935
OFF-11	350.90	5,789,850	1,447,463	313,617	104,539	578,985
OFF-12	417.00	6,880,500	1,720,125	372,694	124,231	688,050
OFF-13	520.00	8,580,000	2,145,000	464,750	154,917	858,000
OFF-14	335.00	5,527,500	1,381,875	299,406	99,802	552,750
OFF-15	303.00	4,999,500	1,249,875	270,806	90,269	499,950
OFF-16	303.00	4,999,500	1,249,875	270,806	90,269	499,950

FOOD COURT

RATE PER 100 sq.ft AREA =3,000,000/-
 PRE LAUNCH RATE PER 100 sq.ft AREA =2,850,000/-
 MONTHLY RENT FOR 100 sq.ft AREA =22,000/-

3rd-9th FLOOR Rate per sq.ft=10,800/-

Shop No.	Shop Area Sq.ft	Total Price PKR	Down Payment 25%	Quarterly Installment 12	Monthly Installment 36	On Possession 10%
F-301	1080.30	11,667,240	2,916,810	631,976	210,659	1,166,724
F-302	596.70	6,444,360	1,611,090	349,070	116,357	644,436
F-303	1155.10	12,475,080	3,118,770	675,734	225,245	1,247,508
F-304	516.80	5,581,440	1,395,360	302,328	100,776	558,144
F-305	514.80	5,559,840	1,389,690	301,158	100,386	555,984
F-306	478.40	5,166,720	1,291,680	279,864	93,288	516,672
F-307	532.40	5,749,920	1,437,480	311,454	103,818	574,992
F-308	512.20	5,531,760	1,382,940	299,637	99,879	553,176
F-309	1091.40	11,787,120	2,946,780	638,469	212,823	1,178,712
F-310	1042.60	11,260,080	2,815,020	609,921	203,307	1,126,008
F-311	1419.00	15,325,200	3,831,300	830,115	276,705	1,532,520

10th-12th FLOOR Rate per sq.ft=10,800/-

Shop No.	Shop Area Sq.ft	Total Price PKR	Down Payment 25%	Quarterly Installment 12	Monthly Installment 36	On Possession 10%
F-1001	1809.60	19,543,680	4,885,920	1,058,616	352,872	1,954,368
F-1002	1155.10	12,475,080	3,118,770	675,734	225,245	1,247,508
F-1003	516.80	5,581,440	1,395,360	302,328	100,776	558,144
F-1004	514.80	5,558,400	1,389,600	301,158	100,386	555,984
F-1005	478.40	5,166,720	1,291,680	279,864	93,288	516,672
F-1006	532.40	5,749,920	1,437,480	311,454	103,818	574,992
F-1007	512.20	5,531,760	1,382,940	299,637	99,879	553,176
F-1008	1091.40	11,787,120	2,946,780	638,469	212,823	1,178,712
F-1009	1042.60	11,260,080	2,815,020	609,921	203,307	1,126,008
F-1010	1419.00	15,325,200	3,831,300	830,115	276,705	1,532,520

*8th Floor and above additional charges of PKR 300/- per Sq.ft are applicable

*Corner apartment will be charged 3% extra



OUR LOCATION

Elite Tower, a project by MSAT is ideally located on the most prime location in New City Housing Project Phase II, Main Commercial Avenue on CPEC (Main Islamabad-Peshawar) Motorway-M1. The society is connecting Brahma Bahter Interchange M-I and G.T Road Wah Cantt with its 110 feet wide main Boulevard stretched over 5km. The New Islamabad International Airport is merely 20 minutes away which makes the location more convenient for our valued customers, locally and internationally.

GET INTOUCH WITH US

A PROJECT BY



HEADOFFICE

- 📍 Ground Floor, Plot No. 21, Fazilet Arcade G11 Markaz, Islamabad
- ☎️ 051-2741600, 2741601, 2741602

SITE OFFICE

- 📍 Plot No.54, St-4,M-Block New City Housing Project Phase II
- ☎️ 051-4950304, 4950860

🌐 www.msat.com.pk